

**Hanging fibrous glass duct fittings up to 48" (1219mm) in width**

Two thirds of the diagonal distance from throat to heel (approx.)

Required only when duct is greater than 18" (450mm) in width.

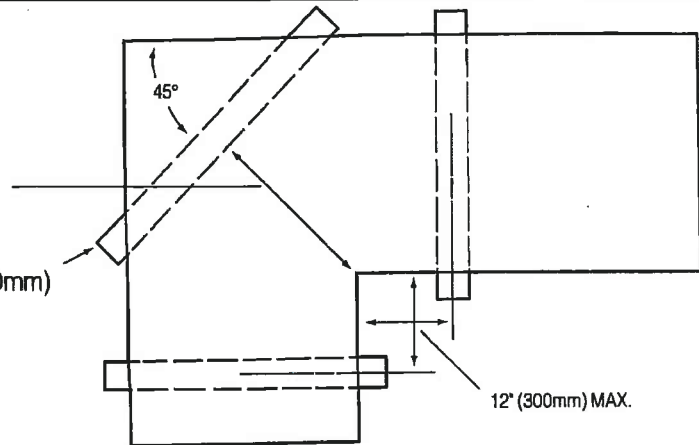


Fig. 6-5A. Elbow support.

If trunk duct hanger falls where branch duct is located, add trunk hangers on either side of branch duct. Do not exceed maximum hanger spacing (see page 6-3 or 6-4).

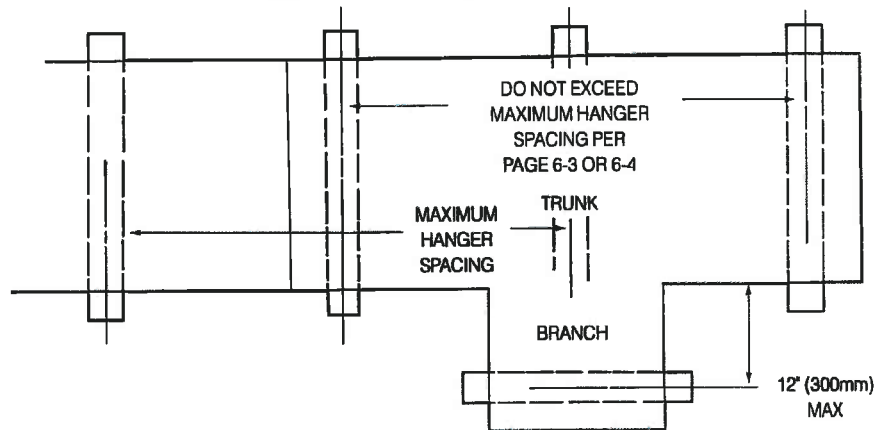


Fig. 6-5B. Branch support.

If a tee run-out hanger falls where trunk duct is located, add run-out hangers on either side of trunk. Do not exceed maximum hanger spacing (see page 6-3 or 6-4).

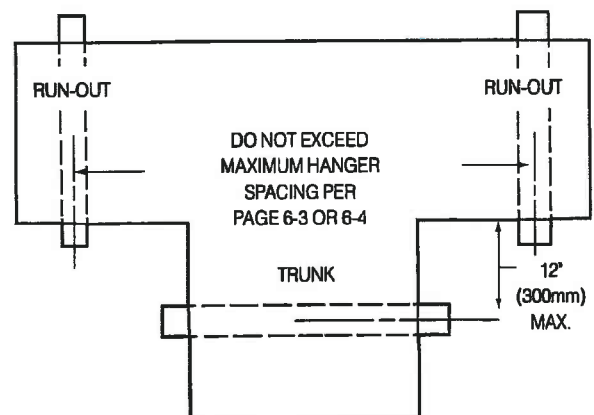
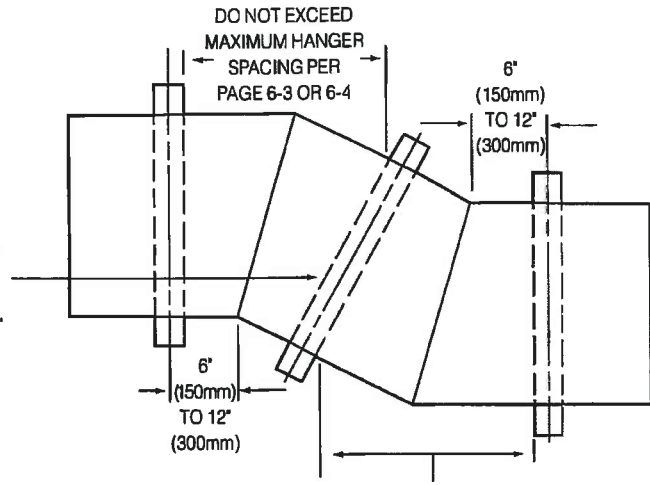


Fig. 6-5C. Tee support.

**Hanging fibrous glass duct fittings up to 48" (1220mm) in width**

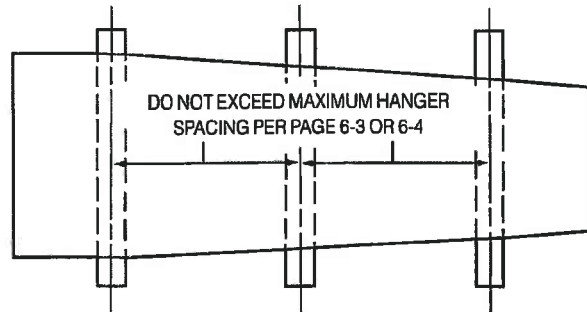
Required only when angled portion of offset is greater than 48" (1220mm) long. Additional hangers may be required to comply with spacing. See page 6-3 or 6-4.



DO NOT EXCEED MAXIMUM HANGER SPACING PER PAGE 6-3 OR 6-4

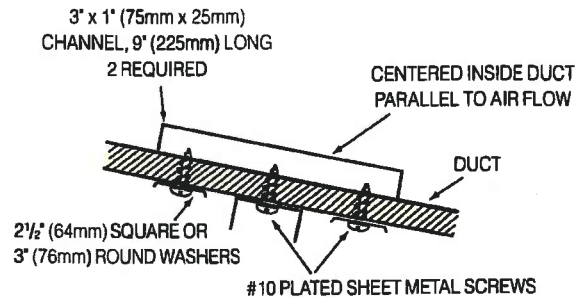
*Fig. 6-6A. Offset support, flat bottom surface.*

Locate hangers as for straight duct. Use closest spacing called for per page 6-3 or 6-4.

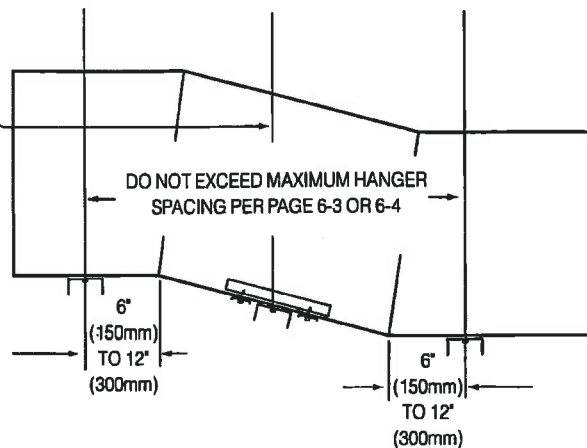


*Fig. 6-6B. Transition support, flat bottom surface.*

Required only when inclined portion of duct is greater than 48" (1220mm). Hanger is attached to duct per detail, Fig. 6-6C. Additional hangers may be required to comply with hanger spacing per page 6-3 or 6-4.



*Fig. 6-6D. Detail, support at inclined bottom surface.*



*Fig. 6-6C. Supporting offsets and transitions with inclined bottom surfaces.*

**CONNECTIONS TO SHEET METAL**

Sealing of fibrous glass duct board to sheet metal sleeve must be made with glass fabric and mastic except where operating pressure is less than 1" w.g. (250 Pa) and sheet metal surfaces are carefully cleaned, in which case pressure-sensitive aluminum foil tape may be used. See Section IV, CLOSURE.

All mechanical connections (screws or screws and washers) of fibrous glass duct to equipment must be 12" (300mm) (max.) on centers.

Washers shall be 0.028" (0.7mm) thick (min.), with turned edges to prevent their cutting into the duct board or the facing.

**FASTENER SCHEDULE**

#10 plated sheet metal screws,  
 board thickness + 1/4" (6mm) with  
 2 1/2" (64mm) square or 3" (76mm)  
 round plated steel washers  
 12" (300mm) nominal on centers.

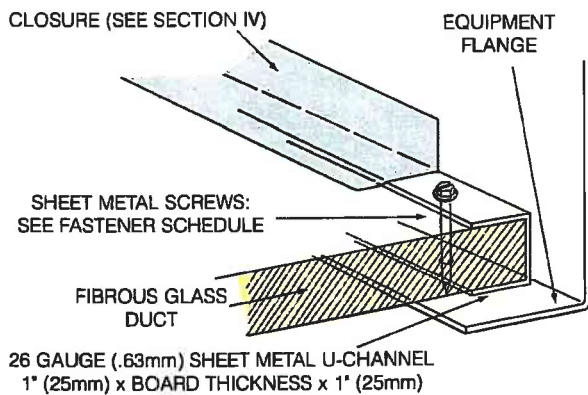


Fig. 3-30A

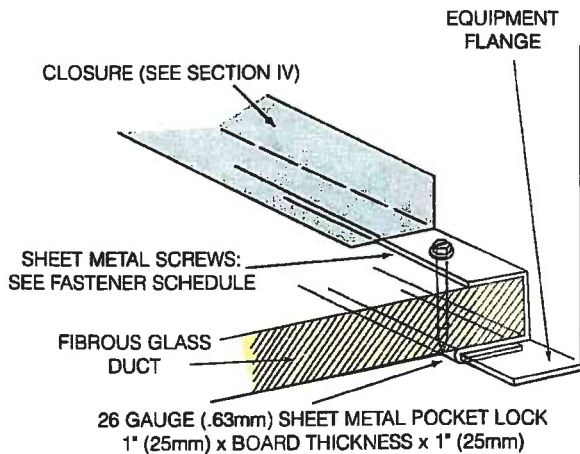


Fig. 3-30B

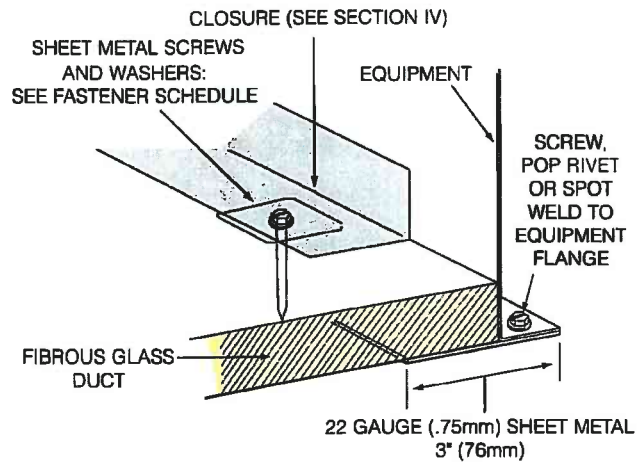


Fig. 3-30C

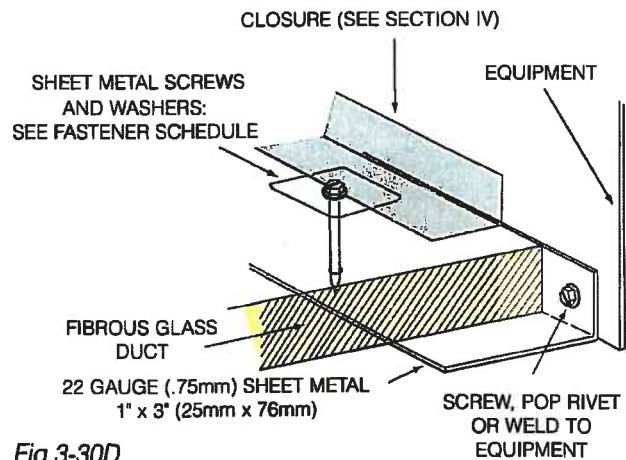


Fig. 3-30D